



MICLYN EMPRESS

5150BHP 65T BP / AHTS

PRINCIPAL PARTICULARS

Year Built	2007
Place Built	Guangzhou Hangtong Shipbuilding, China
Design	Khiam Chuan Marine
Flag	Malaysia
Length Overall	58.70 m
Length BP	54.11 m
Breadth Moulded	14.60 m
Depth Moulded	5.50 m
Draft (max)	4.75 m
Freeboard (SLL)	0.75 m
Class	BV
Notation	I x Hull x Mach Supply Vessel; Fire-Fighting Ship 1 -Water Spraying /Anchor Handling Vessel, Unrestricted Navigation
GRT/ NRT	1537.00 T / 461.00 T
Deadweight	1293.00 T
Bollard Pull	65.00 T

DECK PARTICULARS

Clear Deck Area	375.00 m ²
Deck Carrying Load	668.00 T
Deck Strength	7.00 T/m ²

PERFORMANCE

Maximum Speed	13 Knots @ 19 T/24 hours
Economic Speed	10 Knots @ 12 T/24 hours

PROPULSION SYSTEM

Main Engines	2 x Caterpillar 3516B, 2575 BHP, 1920 kW @ 1600 RPM, Total 5150 BHP
Auxiliary Engines	3 x Caterpillar 3408, 340 kW @ 1500 RPM
Emergency Generator	1 x Caterpillar 3054, 52 kW @ 1500 RPM
Bow Thruster	440 kW Electric-Driven HRP4000 Tunnel Type (CPP), 6 T Thrust
Propellers	2 x Berg, CPP with Kort Nozzle
Steering Gear System	2 x Hydraulic Pump Type Aivio SP21-14D
Rudder	2 x High Performance Streamline Type

TANK CAPACITIES

Fuel Oil	482.42 m ³
Fresh Water	228.76 m ³
Drill & Ballast Water	465.32 m ³
Liquid Mud	259.24 m ³
Bilge	6.99 m ³
Dry Bulk	187.00 m ³ , 4 x 46.72 m ³ per Tank



CARGO DISCHARGE CAPACITIES

Fuel Oil Pump	150 m ³ /hr, 50 m ³ /hr
Fresh Water Pump	100 m ³ /hr
Drill Water Pump	100 m ³ /hr
Liquid Mud Pump	2 x 70 m ³ /hr
Bilge Pump	75 m ³ /hr
Dry Bulk Compressor	2 x 13 m ³ /hr @ 80 m psi

DECK EQUIPMENT

Anchors & Chain	2 x Anchor 1305 kg, 440 m (L) x 36mm (dia) Grade U2
Tugger Winch	2 x Mentrade, 10 T @ 15 m/min
Capstan	2 x Mentrade, 5 T @ 15 m/min
Anchor Windlass c/w Bow	Mentrade, 10 T pull @ 9 m/min, 36mm U2 Chain

ANCHOR HANDLING & TOWING EQUIPMENT

Anchor Handling Winch	Electro-Hydraulic Double Drum Waterfall Type, Mentrade
Towing Winch	56 mm x 1000 m each, Brake Layer 200 T, Pull 1st Speed 150 T @ 6.0 m/min, 2nd Speed 71 T @ 12 m/min, 3rd Speed 50 T @ 18 m/min, 4th Speed 23.5 T @ 36 m/min
AH/Towing Drum Cap	1000 m (L) x 56 mm (Dia) SWR
Spare Reel Drum Cap	1000 m (L) x 56 mm (Dia) SWR
Line Pull @ First Layer	150 T @ 6 m/min
Brake Holding	200 T
Towing Pin	2 x Electro-Hydraulic w/ Turntable Top Flaps
Shark Jaw	SWL 300 T, Electro-Hydraulic
Stern Roller	SWL 200T, 5.0 m (L) x 1.6 m (Dia)

ACCOMMODATION

Berths	4 x 2, 2 x 1, 8 x 4 Berths
Total Pax	42

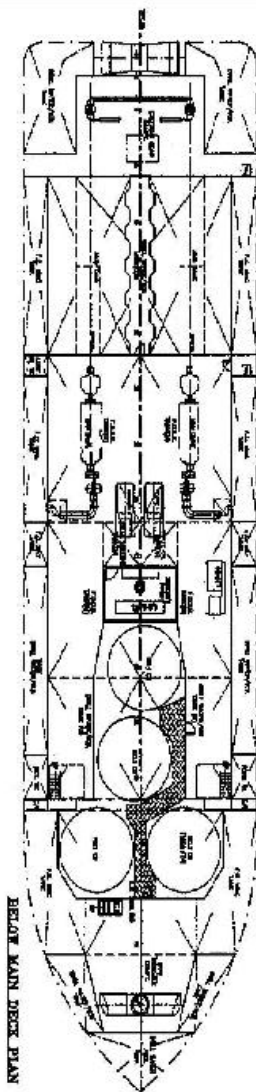
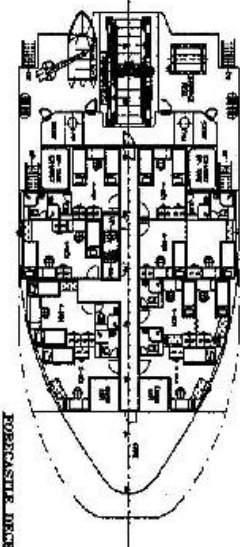
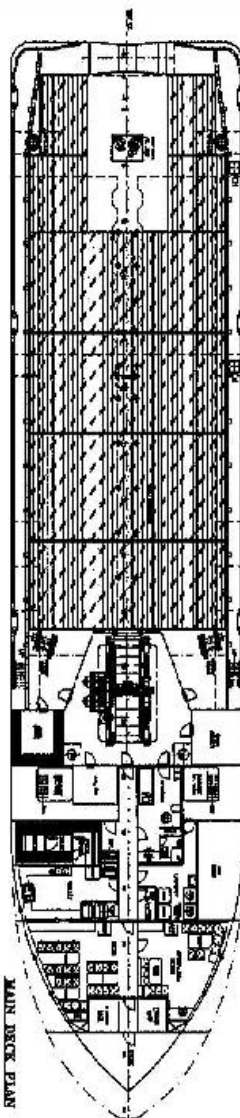
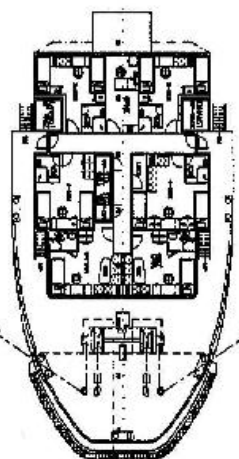
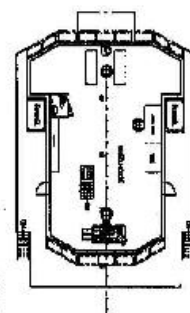
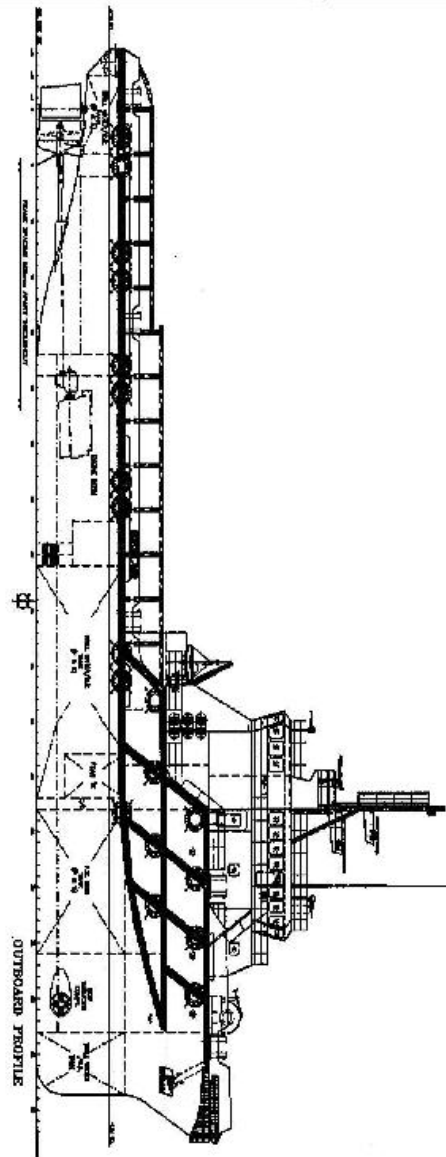
EXTERNAL FIRE-FIGHTING EQUIPMENT

Fi-Fi Notation	Class 1 with Water Curtain All Round
Fi-Fi Monitors	2 x Fi-Fi Monitors, 1200 m ³ /hr, 120 m Throw Length
Fi-Fi Pump	2 x Fi-Fi Pumps, 1541 m ³ /hr

LIFE-SAVING EQUIPMENT

Life Rafts	6 x 25 Men, SOLAS Compliant
Rescue Boat c/w Davit	1 x 6 Men, 25 HP, 20 L, SOLAS Compliant

Particulars are believed to be correct but not guaranteed. Owners reserve the rights to amend the specifications without notifications. Particulars are entirely without warranty as to correctness and interested parties must inspect vessel's certificates, drawings or physical inspection of vessel.



PRINCIPAL DIMENSIONS

[illegible]

MEQ
 100% SATISFACTION GUARANTEE
 1-800-875-2253
 100% SATISFACTION GUARANTEE
 1-800-875-2253