

Specifications Offshore and support vessel "Victory-G"



Main Details:

Year of construction: 2004
Refurbished: 2006
Vessel Name: "Victory-G"
Owner: Rederij Groen BV
Flag: Panama
IMO Number: 9318838
Call Sign: 3ECY4
MMSI: 354791000

Dimensions:

L.o.a : 53.80 Mtrs.
 Width : 13.80 Mtrs.
 Draught : 3.80 Mtrs
 Net Tonnage 317
 Gross Tonnage 1058

Generator(s):

Cummins : 2x N4-DM, 260 kW
 Cummins : 1x 6CT8.3-D(M)122kW (Harbour)

Main engine(s):

Caterpillar : 2x 3512, 1575HP
 Total 3150 HP @ 1800 RPM

Propulsion system:

Propeller : 2x bronze 4 blades
 with Kortnozzle
 Rudder : 2x independent

Bow Thruster:

1x Caterpillar 3412FFP Tunnel Type 5 Ton

Anchor(s):

1600 kg port anchor, 1600 kg stbd anchor,
 Port chain-10 lengths, St.chain- 7 lengths.

Crane(s)/Lifting material:

Deck Crane : 1x TTS, GPF 320-10-15
 10.0 Ton SWL @ 15 mtr
 MOB Crane : 1x Sekwang M.M., 1.65 Ton SWL
 A-Frame : 1x Davit PLR-12004 12 tons

Deck Equipment:

Anchor Windlass : 1x Hydraulic 5 Ton @ 15 m/min
 Brake holding 30.05 Ton
 Tugger Winch : 1x Hydraulic 10 Ton
 Capstan : 2x Hydraulic 5 Ton

Safety Equipment:

MOB : 1x 6 pers. with outboard motor
 Life Rafts : Solas Approved 6 x 25 pers.

Special features:

Fuel Hose Reel : 1x 4" 240 mtr
 Dist. Line Reel : 1x 4" 110 mtr
 Cable Reel : 1x 52 mm 8000 mtr

Communication Equipment:

GMDSS : A1 – A2 – A3
 SSB MF/HF radio: 1x FurunoFS-2570-C with DSC
 VHF Radio : 2x FurunoFM-8500with DSC
 : 1x SailorRT5022 with DSC
 Portable VHF : 3x JotronTron TR20
 Inmarsat Sat-C : 1x FurunoFelcom 15
 : 1x FurunoFelcom 18
 Mini-M : 1x Iridium
 VSAT System : 1x Sailor
 AIS : 1x Furuno FA-100
 E.P.I.R.B. : 1x JotronTron40 S
 UHF Fire : 2x Sailor

Navigation Equipment:

Radar : 1x FurunoFAR-2117
 : 1x FurunoFR-7062
 : 1x FurunoFAR-2117
 GPS Navigation : 2x FurunoGP-150
 : 1x FurunoGP-32
 Echo Sounder : 1x FurunoFE-700
 Navtex : 1x FurunoNX-500
 Gyro Comass : 1x Robertson RGC-11
 Magnetic Compass
 : 1x DaikoSR150PK
 Auto. Pilot Fwd : 1x Simrad AP50
 Auto. Pilot Aft. : 1x Simrad AP50
 Electronic Charts: 1x Transas NavigatorTsunami
 Anemometer : 1x Furuno RD 30

Bunker/Towing/Storage capacity:

Fresh Water : 158m³
 MDO : 850 m³
 Lub Oil : 11 m³
 Fuel Transfer : 4" TODO
 Bollard Pull : 34,5 Ton
 Freezer : 30,18 m³ below deck
 3x 20ft Reefer container on deck
 Dry Storage : 56,45 m³ below deck

Speed/Fuel Consumption:

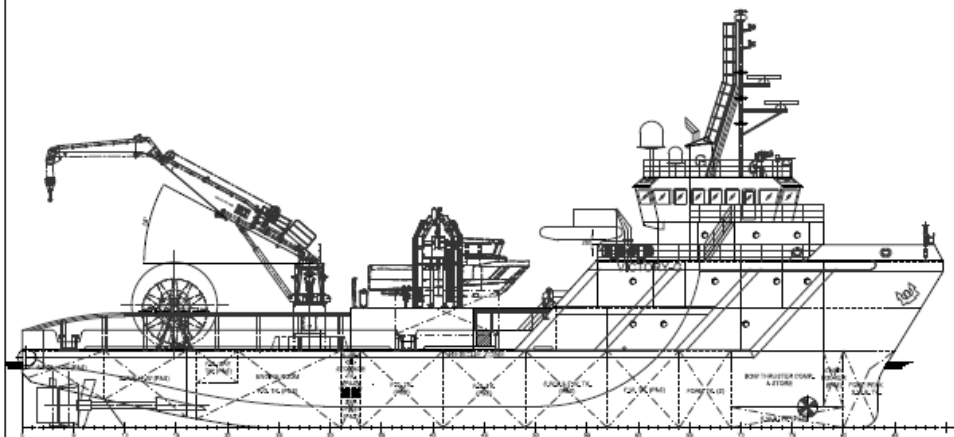
Max Speed 12,5 knots :8500 ltr/24 hrs
 Eco Speed 8,0 knots :4500 ltr/24 hrs

Water maker(s):

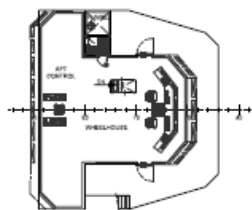
FW Maker : Aquamar AQE 6D
 Reverse Osmosis plant
 Capacity : 4.8 m³/per day

Accommodation (fully air conditioned):

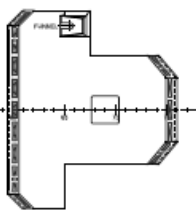
Total Accommodation : 50
 Berths : 4 x 1 pers., 3 x 2 pers.
 4 x 4 pers., 4 x 6 pers.



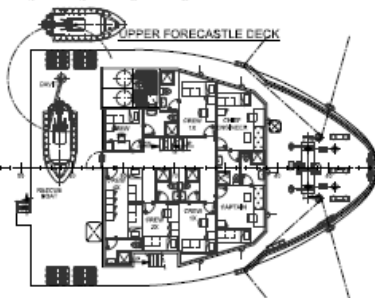
WHEELHOUSE DECK



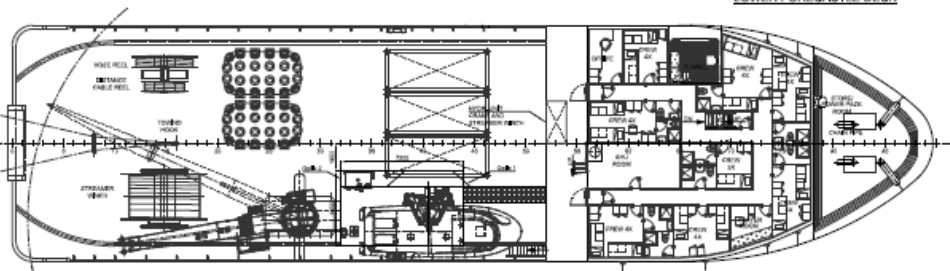
TOP DECK



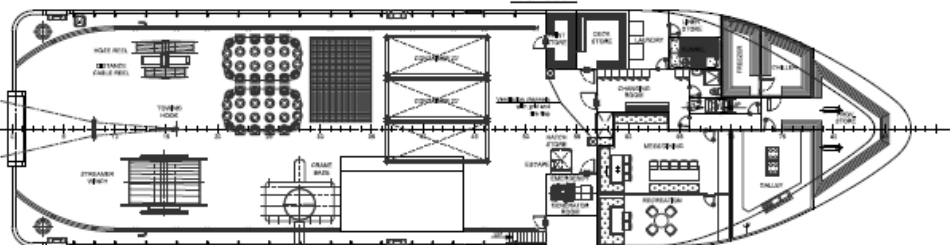
UPPER FORECASTLE DECK



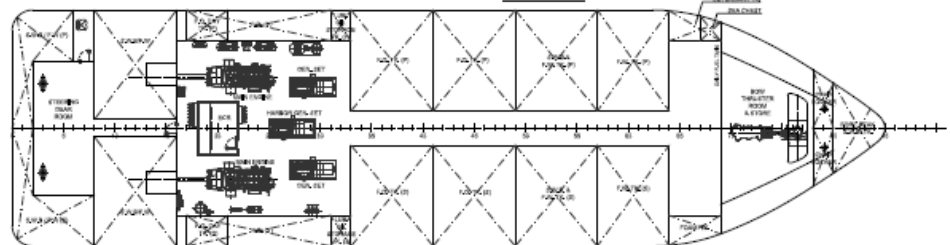
LOWER FORECASTLE DECK



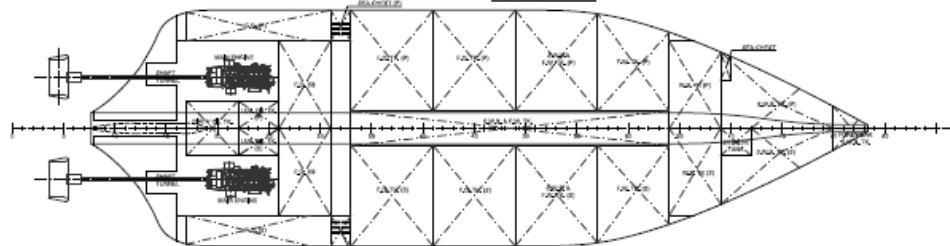
MAIN DECK



LOWER DECK



DOUBLE BOTTOM



MAIN DIMENSIONS

- LOA : 53,50 [M]
- L WL : 50,40 [M]
- B (MAX) : 13,50 [M]
- DEPTH MLD : 4,50 [M]
- DRAFT DESIGNED : 3,20 [M]
- DRAFT MAX : 3,50 [M]
- COMPLEMENT : 42 MEN

SHIP'S REGISTRATION

- SHIP'S NAME : VICTORY-G
- CALL SIGN : 3E014
- PORT OF REGISTRY : PANAMA
- OFFICIAL No : 54781-PEXT
- IAC No : 931555
- GROSS TONNAGE
- NET TONNAGE : 317

APPROVALS		DATE	
DESIGNED	FOR APPROVAL	DATE	DATE
		VICTORY-G	
A-FRAME ARRANGEMENT			
NO.	DATE	BY	CHKD.
01	01/11/2011	IT	IT